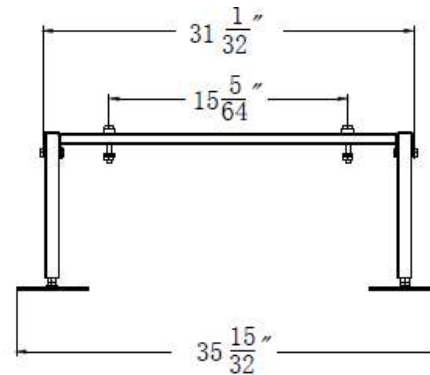
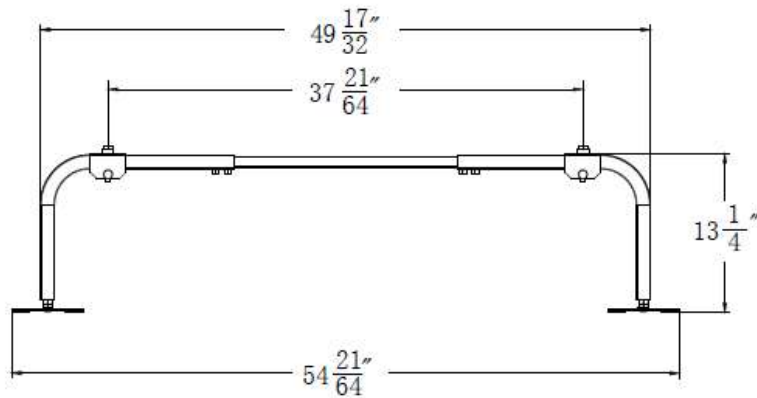


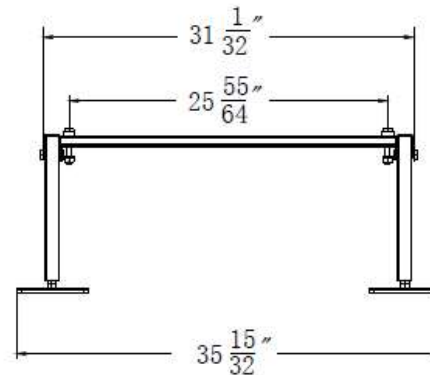
SIDE VIEW RETRACTED



END VIEW RETRACTED



SIDE VIEW EXPANDED



END VIEW EXPANDED

(*)- WIDTH IS ADJUSTABLE IN 1" INCREMENTS

IMPORTANT NOTE: THE INSTALLER IS RESPONSIBLE FOR THETHERING AND BOLTING UNITS TO WITHSTAND WIND AND/OR SEISMIC LOADS.

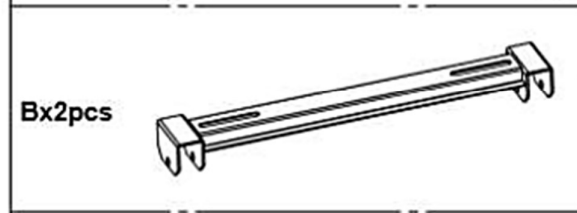
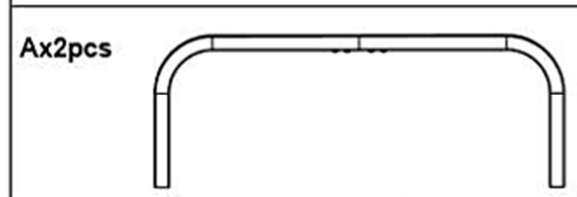
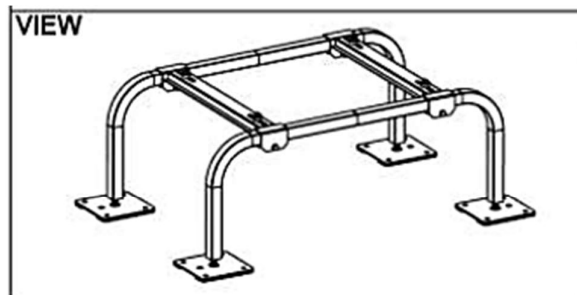
UNLESS OTHERWISE SPECIFIED,
DIMENSIONS ARE IN INCHES (MILLIMETERS)
TOLERANCES ARE: ANGLES ±1.0°
FRACTIONAL SIZES XY/Z ±1/64
INCHES (MILLIMETERS)
X = ±0.1 (X = ±0.25)



DWG. NO:

MINI SPLIT STAND -1204

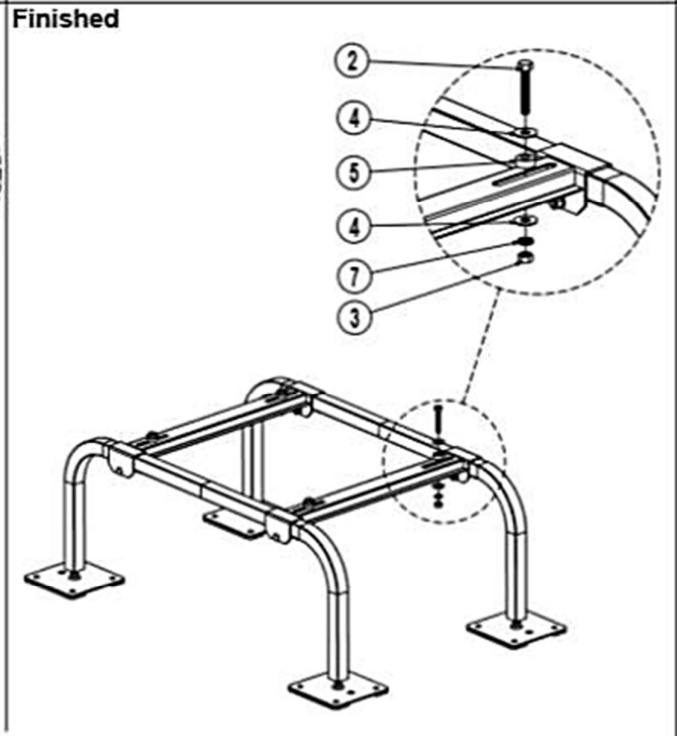
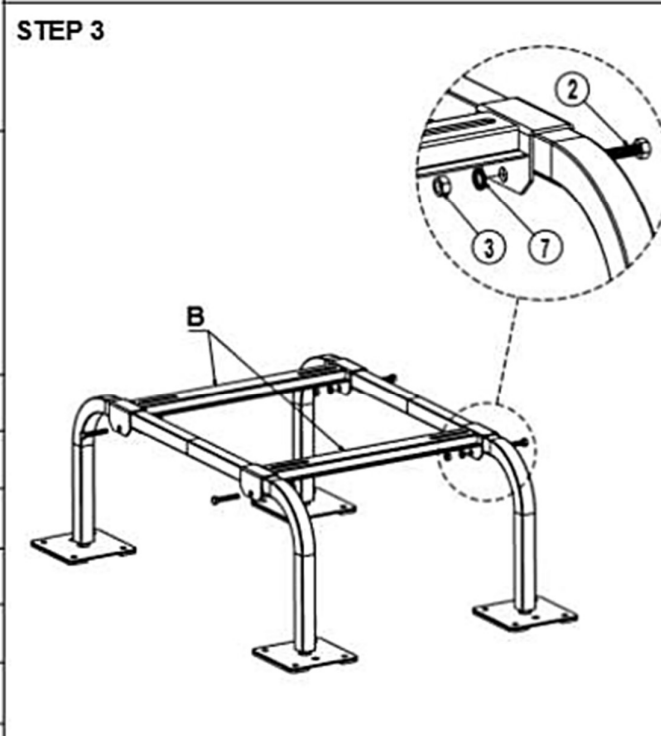
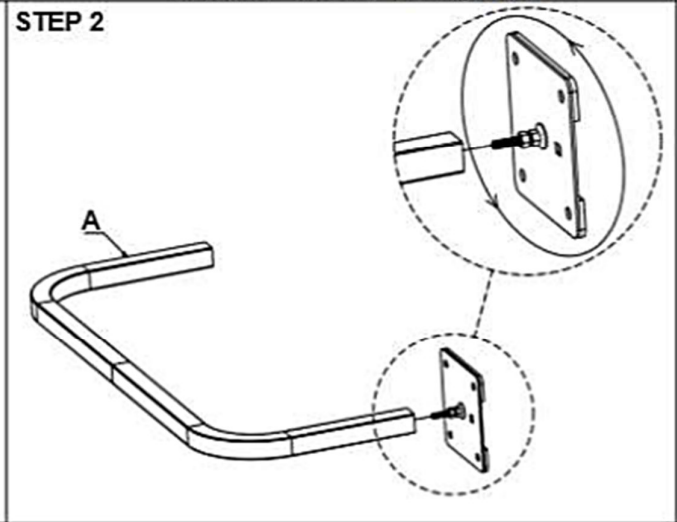
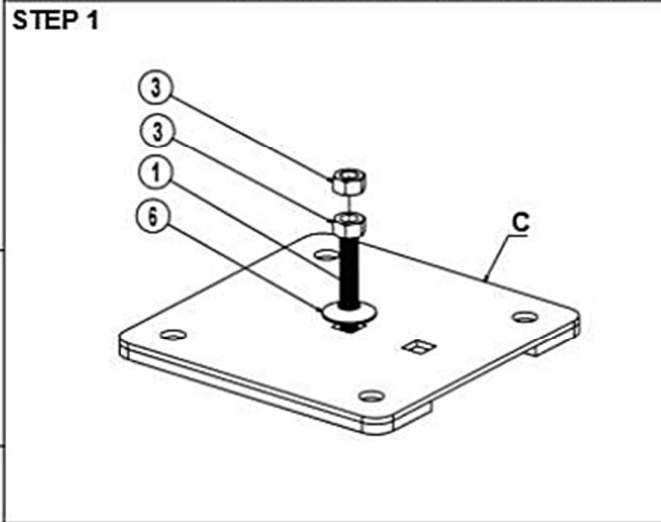
IBEX 1204



1	Carriage bolt M10x50		x4
2	Hex bolt M10x50		x8
3	Nut		x16
4	Washer M10		x8
5	Rubber washer M10		x4
6	Rubber bonded washer M10		x4
7	Lock washer		x8

ASSEMBLY INSTRUCTION

Model: 1201, 1202, 1204



Note : Tighten all bolts to 85 ft/lbs. of torque